



Burnet County Comprehensive Plan



What Is the Comprehensive Plan?

This is a county strategic plan that will focus on the areas where the county government can optimize opportunities to improve the quality of lives in Burnet County.



Role of County Government

- Infrastructure – Roads, Solid waste, flood control
- Subdivision Regulation – limited
- Environmental Protection
- Economic Development
- Justice System
- Elections



Burnet Growth

- Since the 2000 Census, Burnet County has increased population by over 7,000 new residents and nearly doubled since 1990
- Trend is expected to continue through the end of the decade

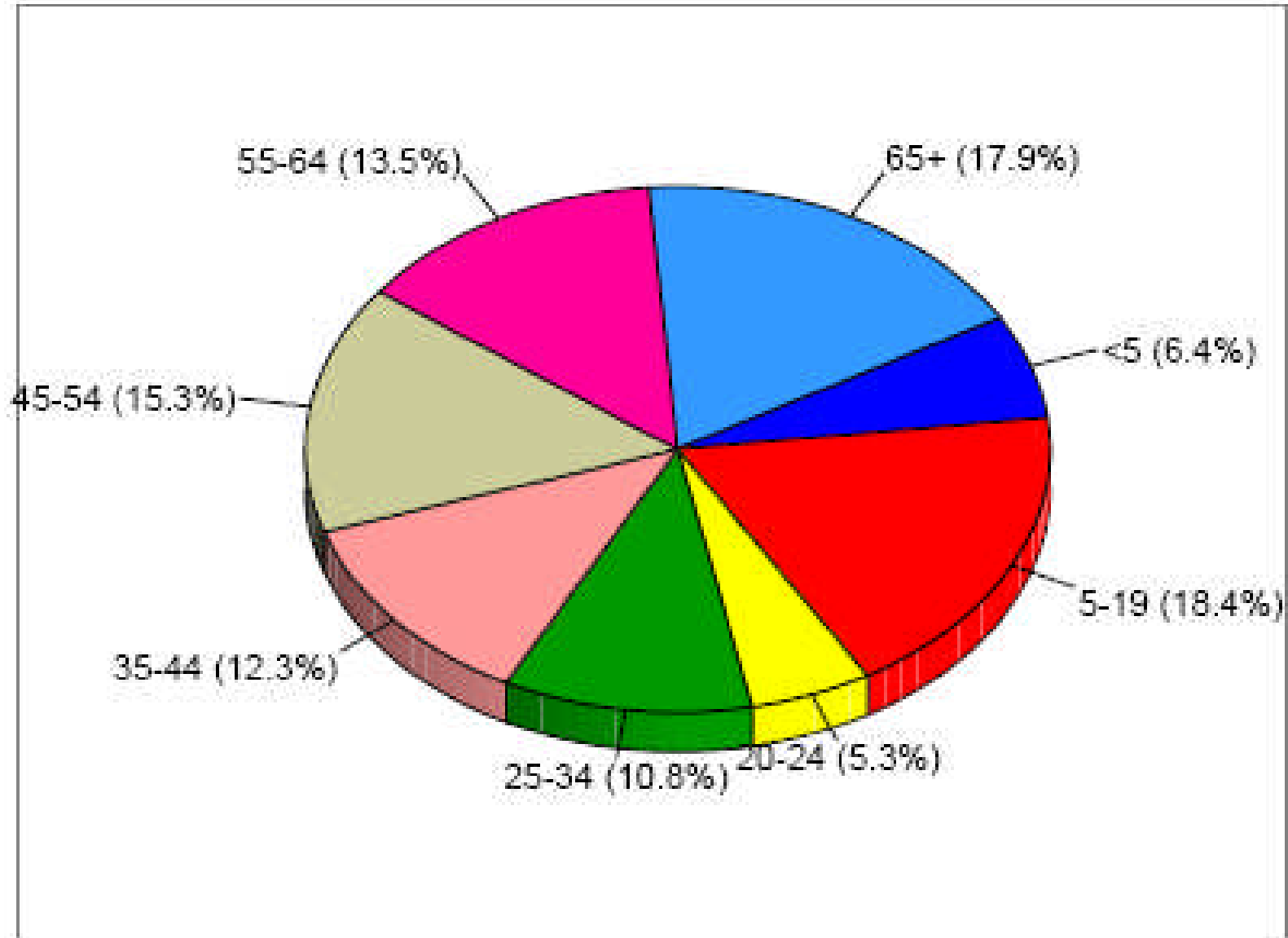
	1990	2000	2007	Change 00-07
Population	22,677	34,147	41,219	21%



Population by Race (2000 Census) and Projection (from TSDC)

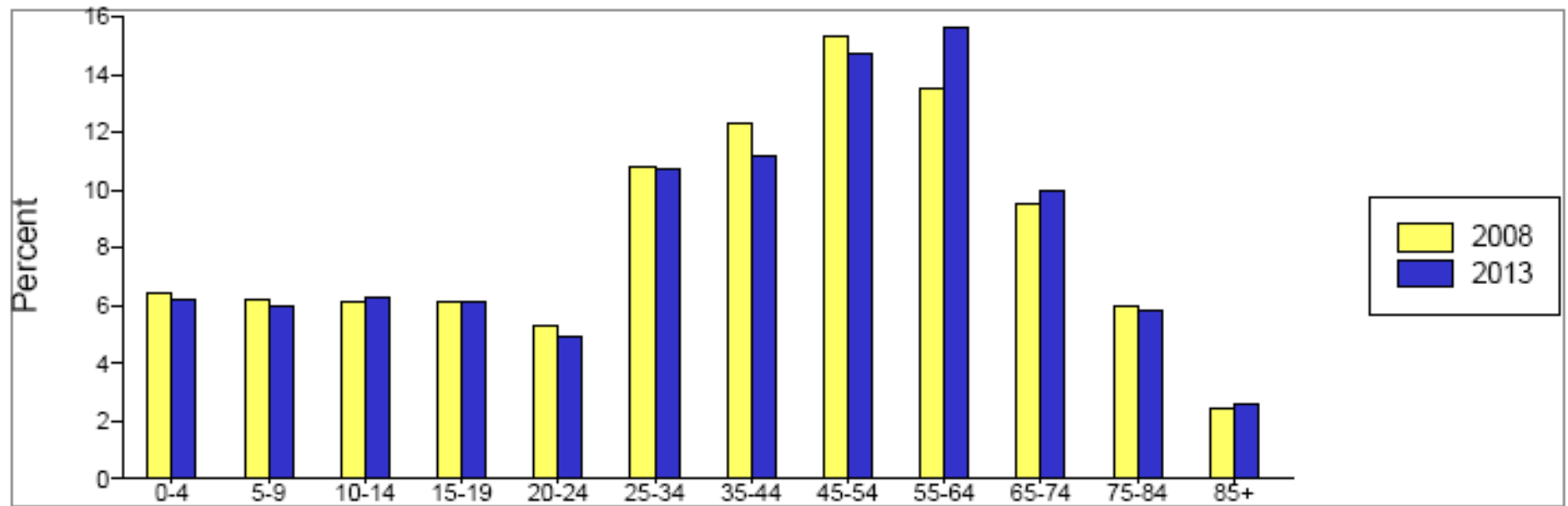
Race	2005	2010	2015	2020
White	81.3%	79.8%	78.2%	76.8%
African American	1.5%	1.4%	1.3%	1.1%
Other	0.8%	0.8%	0.7%	0.7%
Hispanic or Latino (Ethnicity)	16.4%	18.0%	19.7%	21.3%

2008 Population by Age





Population by Age



Household Income

Median
Household
Income

2000

\$37,546

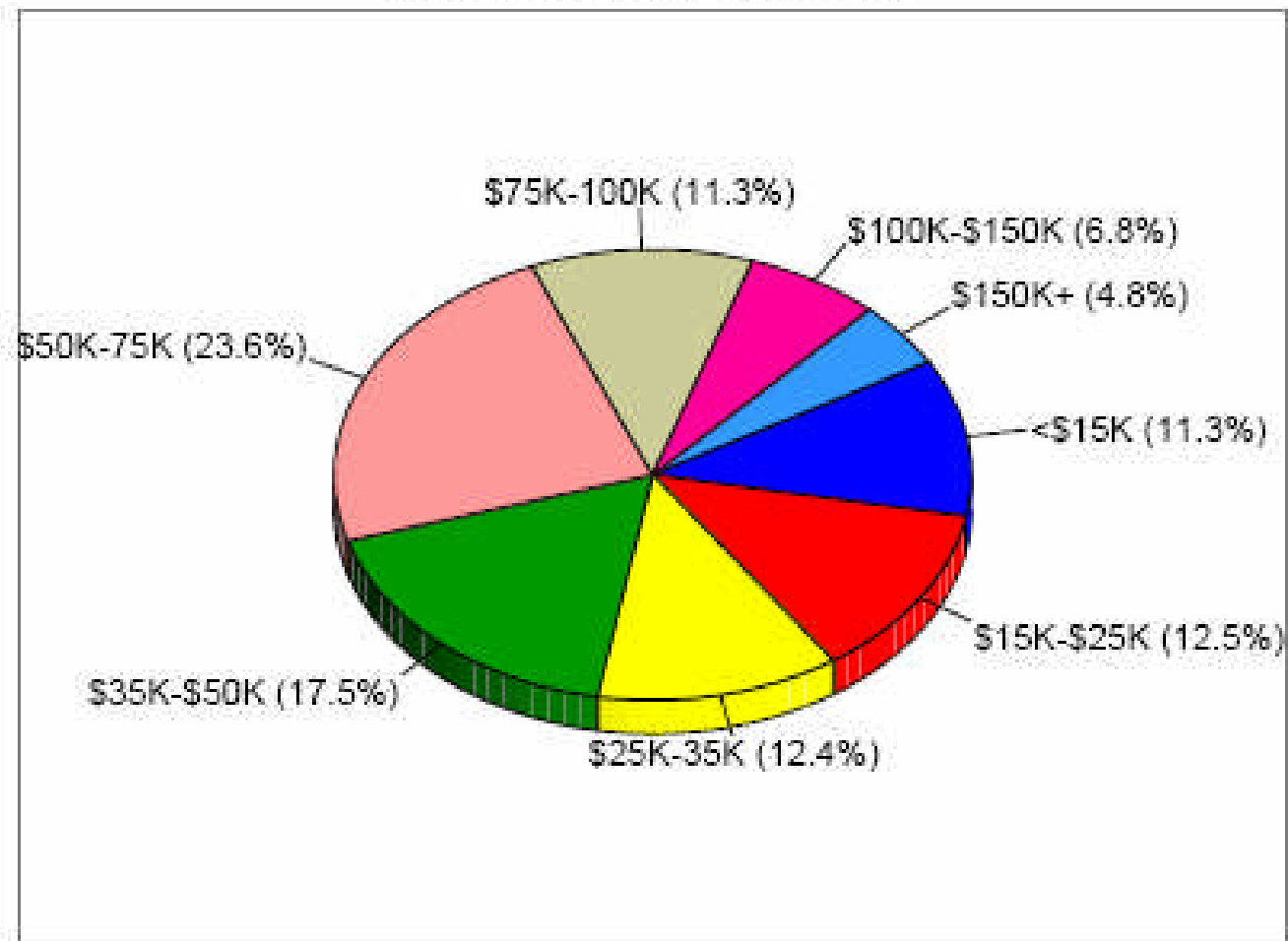
2008

\$46,384

2013

\$53,352

2008 Households by Income





Housing Characteristics

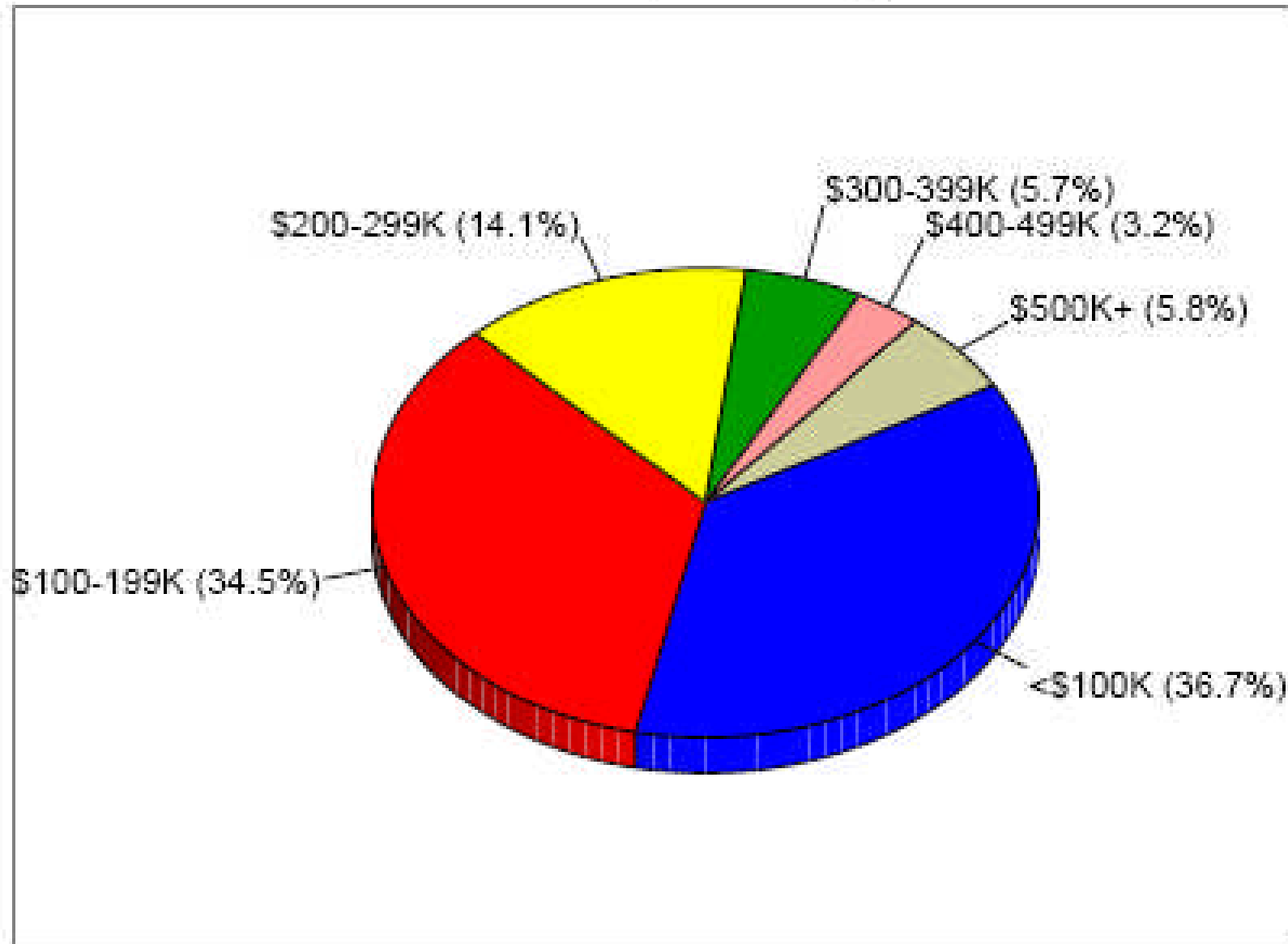
Total Housing Units

2000	2008	2013
15,933	20,456	23,605

Median Value

2000	2008	2013
\$85,942	\$128,435	\$141,284

2008 Owner Occupied HUs by Value

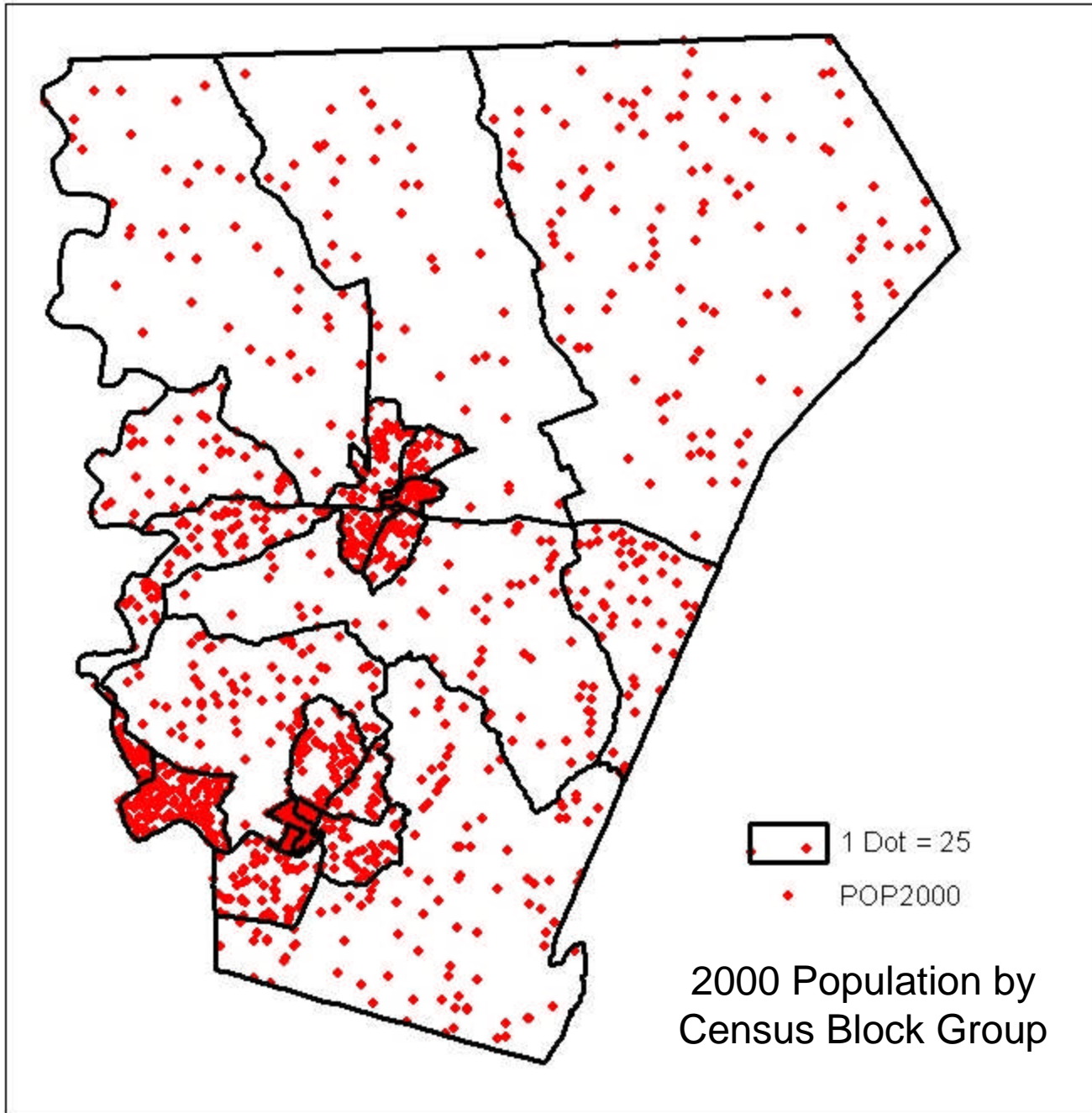
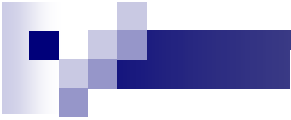


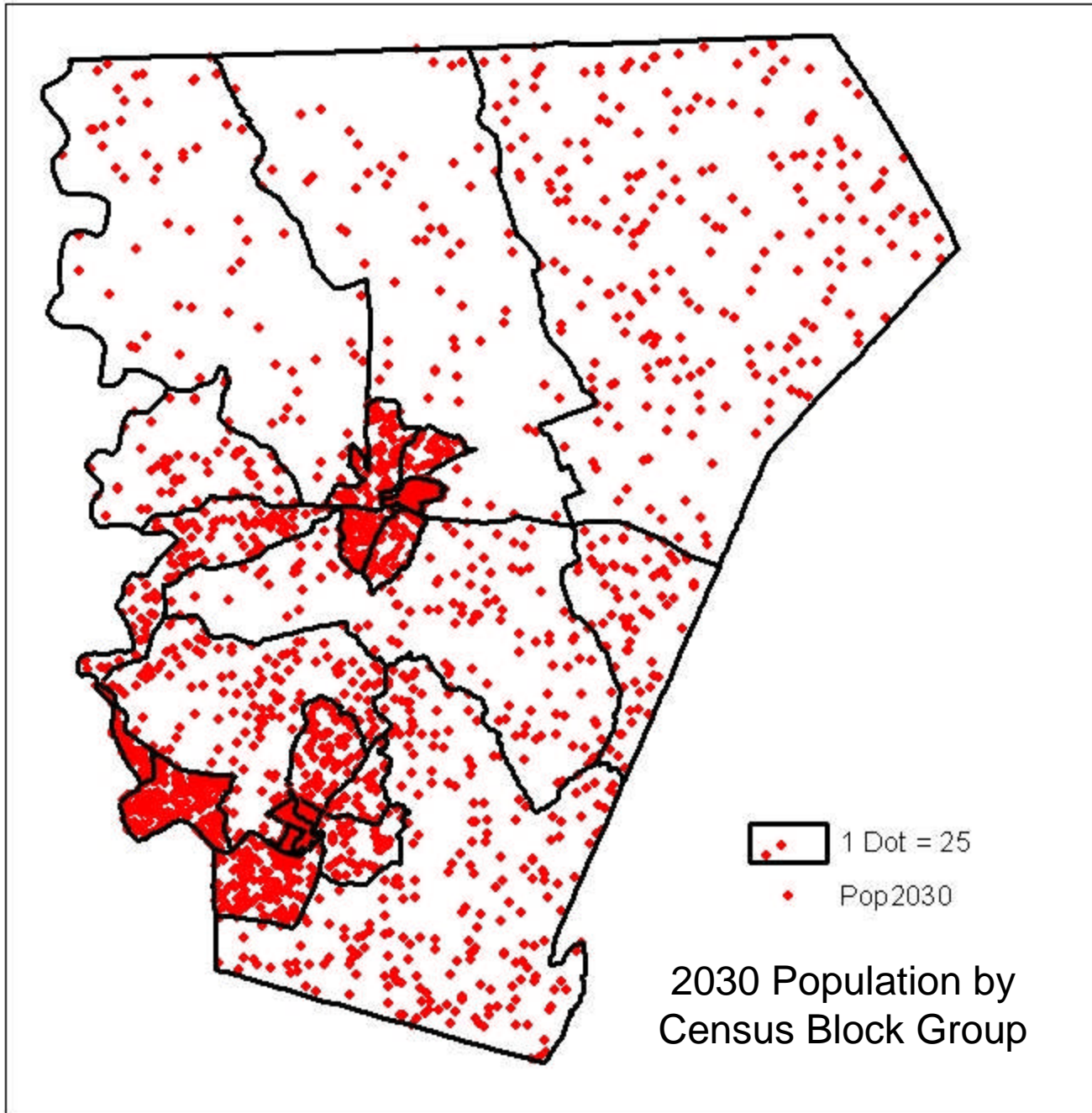
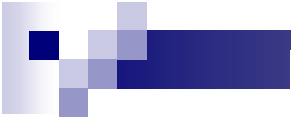


Population Projections

Texas Water Development Board

Scenario	2000	2010	2020	2030	2040	2050	2060
Burnet County	34,147	41,924	51,044	60,382	69,271	78,981	90,263
Bertram	1,122	1,307	1,524	1,746	1,958	2,189	2,458
Burnet	4,735	5,625	6,668	7,736	8,753	9,864	11,154
Granite Shoals	2,040	2,489	3,015	3,554	4,067	4,627	5,278
Marble Falls	4,959	5,604	6,361	7,136	7,874	8,680	9,616
Meadowlakes	1,293	1,821	2,440	3,074	3,678	4,337	5,103







Population Projections

Texas State Data Center

Scenario	2010	2015	2020	2025	2030	2035	2040
Middle	42,669	47,627	52,861	58,169	63,453	68,668	73,912
High	51,960	63,398	76,529	90,817	105,572	120,121	134,114
'00 – '04	44,442	49,953	55,301	60,207	64,224	67,101	68,770



Increased Water Usage

Texas Water Development Board

	2000	2010	2020	2030	2040	2050	2060
Irrigation	989	1,044	928	824	733	651	578
Livestock	918	918	918	918	918	918	918
Manufacturing	11	15	18	21	24	27	29
Mining	12	14	15	16	17	18	18
Municipal	4,643	6,306	7,898	9,222	10,555	11,926	13,328



Questions

- **Why do you live in Burnet County?**
- **How can those qualities be preserved or enhanced?**
 - **What is the County doing well?**
 - **What Challenges are facing Burnet County?**
- **What should be done to address those challenges?**
- **How is growth affecting you and your family?**